

## Price on request

### Buying house

6 rooms

Surface : 165 m²

Surface of the land : 310 m²

Exposition : Sud est

View : Citadine

Couverture : Tiling

### Features :

Climatisation, Double Glazing, Laundry room, Automatic gate

5 bedrooms

1 terrace

1 bathroom

1 shower

2 parkings

Energy class (dpe) : B

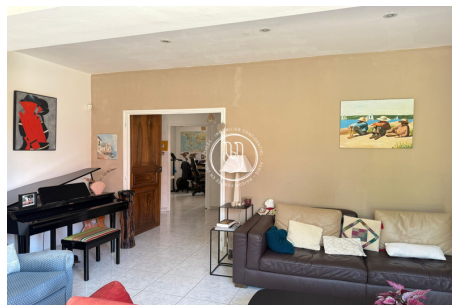
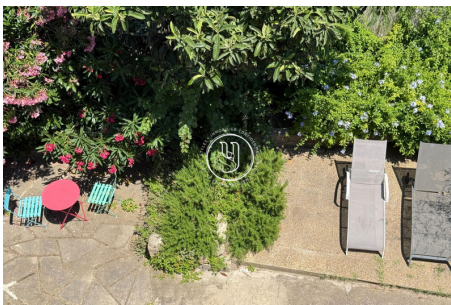
Emission of greenhouse gases (ges) : A

Document non contractuel  
 07/12/2025 - Prix T.T.C



## House 3985 Montpellier

Montpellier Center, character house with garden. A stone's throw from Place de la Comédie and St Roch train station, family home in a chic and bohemian neighborhood, quiet and pleasant to live in. Everything is within walking distance: access to the historic center, shops and markets, schools, middle schools and high schools, tram. Stone building from the beginning of the last century on two levels. Beautiful living room opening onto a pretty garden. Five bedrooms, including one on the ground floor. A plus to exploit: a bright attic of almost 30 m² opening onto a terrace. Perfect for a master suite or artist studio. New roof, heat pump. Parking spaces. Exit to the sea and motorway access in the immediate vicinity. Fees and charges :



STYLES - 10 Place Vendôme - 75001 PARIS

Tél: +33 (0) 952 346 611 - [contact@styles.fr](mailto:contact@styles.fr)

Carte professionnelle n°CPI 7501 2016 000 010 235 - RCS Paris 484 347 232

Code NAF 6831Z - SIRET 484 347 232 000 49

Document non contractuel